



DISEASES OF URINARY BLADDER AND HOMOEOPATHY

Dr. Rajneesh Kumar Sharma MD (Homoeopathy)
Dr. Swati Vishnoi BHMS

Diseases of Urinary Bladder and Homoeopathy

© Dr. Rajneesh Kumar Sharma MD (Homoeopathy)

Dr. Swati Vishnoi B.H.M.S.

Homoeo Cure & Research Institute
NH 74, Moradabad Road, Kashipur
(Uttaranchal) INDIA Pin- 244713

Ph. 05947- 260327, 9897618594

E. mail- drrajneeshhom@hotmail.com

www.treatmenthomoeopathy.com

www.homeopathicreatment.org.in

www.homeopathyworldcommunity.com



Contents

Anatomy	2
Shape	2
Capacity	2
Location	2
Relations	2
Male and Female urethra	3
Blood and nerve supply	3
Functions and Physiology	3
Urinary Bladder Diseases, Signs and Symptoms	4
Bladder cancer	4
Causes.....	4
Symptoms.....	5
Cystitis	5
Causes.....	5
Symptoms.....	6
Bladder stones	6
Causes.....	6
Symptoms.....	7
Diseases of bladder function.....	7
Causes.....	7
Symptoms.....	8
Diagnosis	8
Treatment.....	9
Cystitis	9
Bladder stone	11
Bladder cancer	12
Incontinence.....	12
Bibliography	15

Anatomy

Shape

Spherical

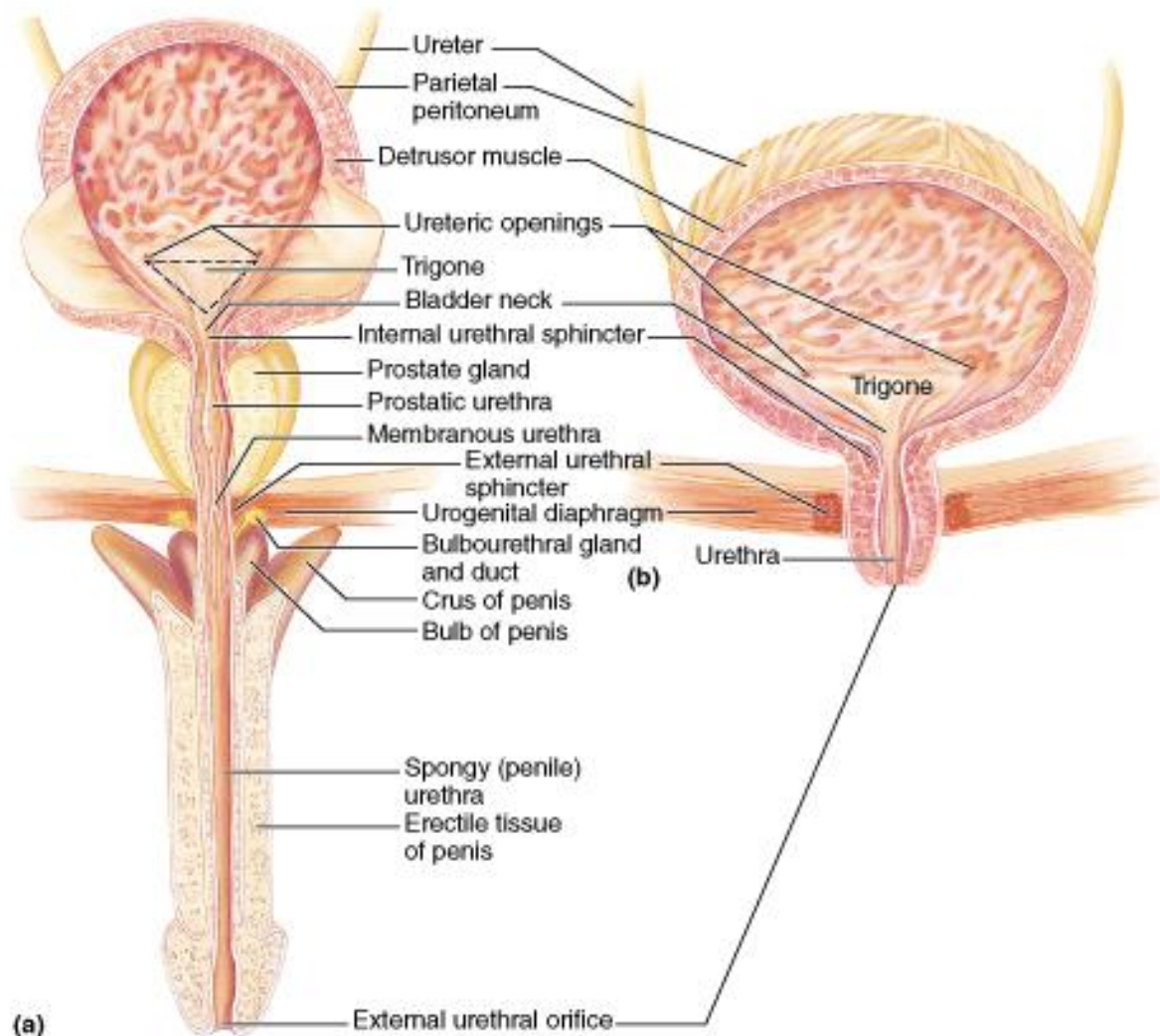
Capacity

400 cc of urine, while empty it is no larger than a tennis ball

Location

Superiorly -end of the both ureter and down in the abdomen

Posteriorly- behind the pubic bone



Copyright © 2001 Benjamin Cummings, an imprint of Addison Wesley Longman, Inc.

Relations

Both ureters enter the bladder from the sides. They actually go diagonally through the bladder wall, so they are being squeezed somewhat when the bladder fills; in this way a valve is formed that provides for a one-way flow, prohibiting reflux of urine from the bladder to the kidneys. The openings of the ureters are located near the bladder outlet. A triangle is thus formed between the two ureteral openings and the bladder outlet, which is the beginning of the urethra.

Male and Female urethra

In the male, the anal canal is right behind the bladder and the prostate is located right under the bladder, around the urethra. In the female the uterus and vagina lie in between the bladder and the anal canal. The female urethra is, by the way, relatively short.

Blood and nerve supply

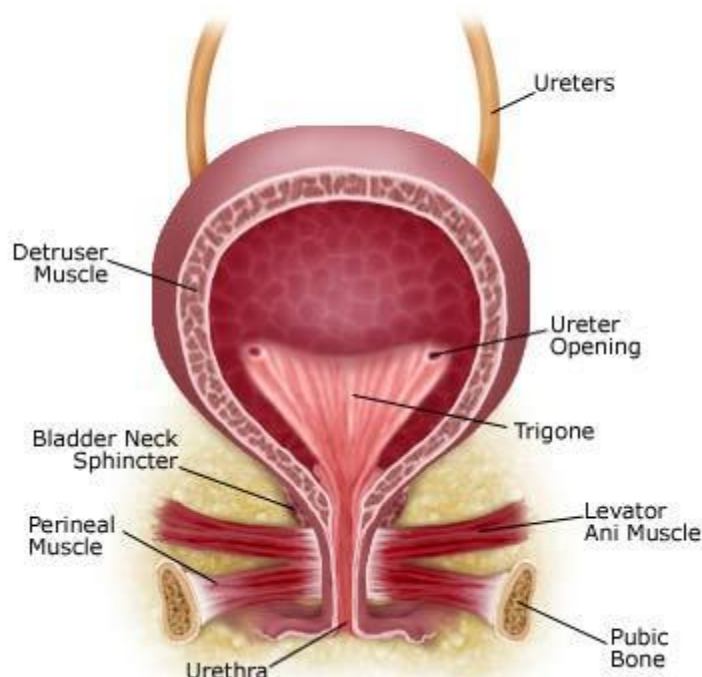
A couple of blood vessels are connected to the bladder from the sides, ensuring a wealthy blood supply. The nerve supply is also abundant; a virtual network of nerve-bundles is connected to the bladder, while even quite a few nerve cells are present to be able to do some on-the-spot regulating of the function of the bladder.

Functions and Physiology

The urine, produced by the kidneys, is transported by the ureters towards the bladder to be stored there.

A second important feature of the bladder is the voiding of stored urine once a suitable spot has been found to do that, i.e. a toilet. In order to get this done as quickly as possible, the bladder wall is equipped with muscle fibers, so that the bladder can shrink itself into the size of a tennis ball. Straining, i.e. using the muscles of the abdomen enhances the pressure on the bladder contents and thus causes a more powerful flow of urine, but will also squeezes the bladder outlet and enhance the outflow resistance.

Bladder Muscle Anatomy



The sphincter around the urethra, that normally closes the outlet to prevent leaking, has to relax during act of urination.

This everything is controlled by nerve cells in the spine and around the bladder. The sensitive spot in the bladder consists of the triangular area between the openings of the ureter and the bladder outlet, the trigone. Once this area gets stretched at a certain degree of bladder filling, your brain gets a signal that the bladder is going to need emptying.

The signals get stronger while the bladder gets fuller or if it is kept resisting, the control center in the spine takes over and starts the voiding procedure so that the bladder empties itself completely. Babies always pass urine this way.

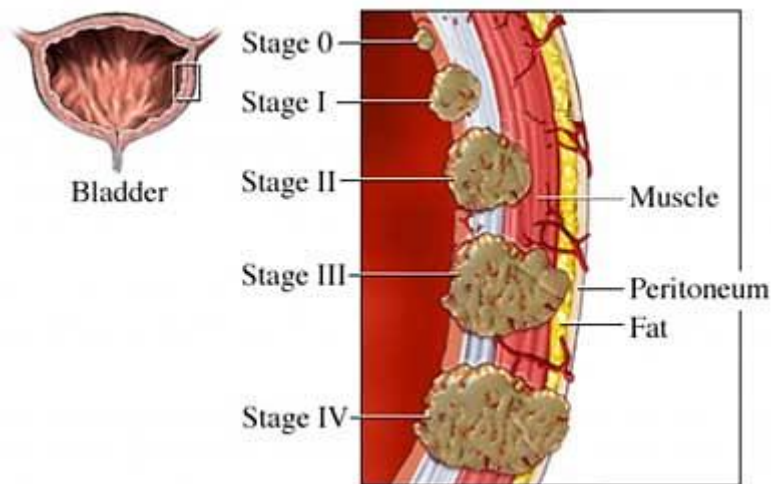
Urinary Bladder Diseases, Signs and Symptoms

Main diseases of the bladder can be subdivided into following categories-

Bladder cancer

Bladder cancer may be of several types, arising from the epithelial lining, the urothelium. Rarely the bladder is involved by non-epithelial cancers, such as lymphoma or sarcoma (Psora/ Sycosis/ Syphilis).

The most common type of bladder cancer recapitulates the normal histology of the urothelium and is known as transitional cell carcinoma or more properly urothelial cell carcinoma.



If it is not treated in time, the cancer might start local encroachment, and might also metastasize to other parts of the body.

Causes

- Congenital defects (Syphilis)
- Chemotherapy and radiation therapy (Causa occasionalis)
- Chronic bladder infections and irritations (Psora/ Sycosis/ Syphilis)
- Exposure to certain chemicals (Causa occasionalis)
- Low fluid consumption (Indisposition)
- Personal or family history of bladder cancer (Cancerous)
- Some medications - pioglitazone (Actos) and aristolochic acid (Causa occasionalis)
- Smoking (Causa occasionalis)

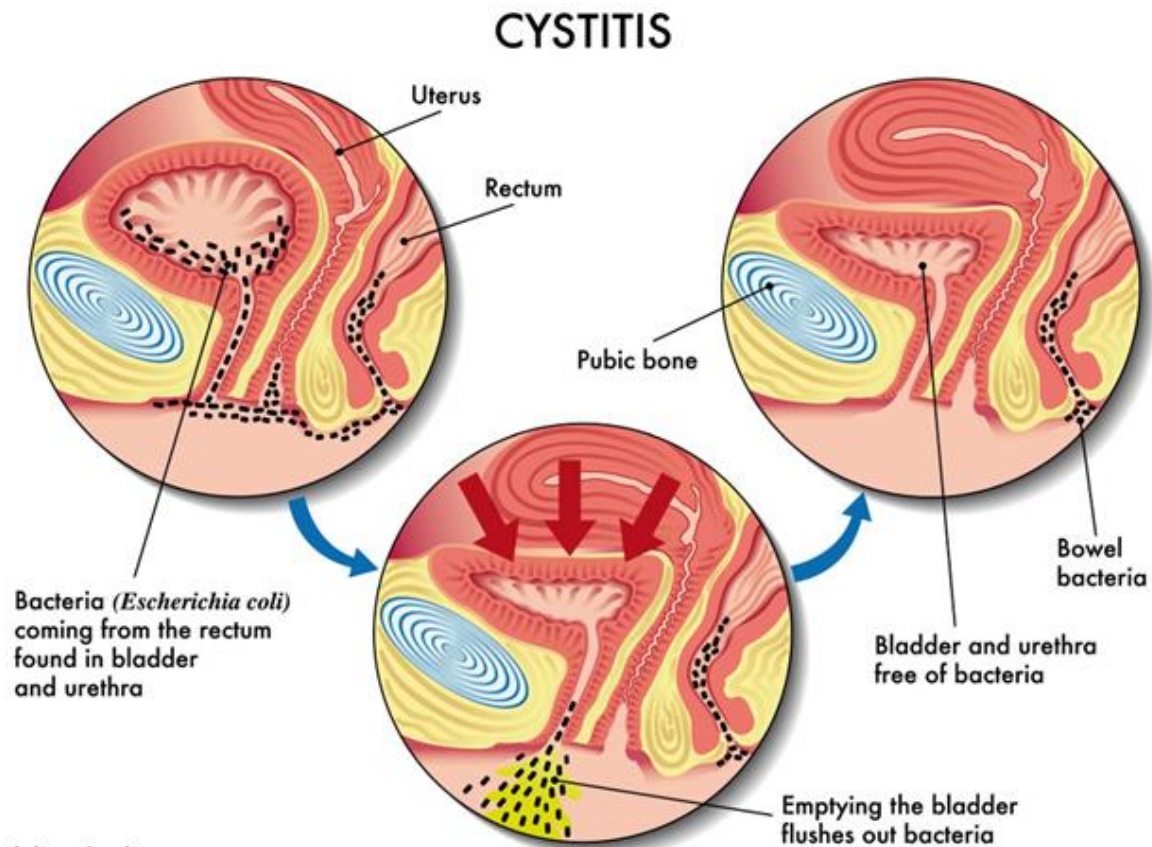
Symptoms

- Hematuria is the most common symptom
- Dysuria
- Urinating small amounts frequently
- Frequent urinary tract infections (UTIs)

Cystitis

Bacteria can easily slip up into the bladder, especially in the female due to a very short urethra. Normally, these bacteria are washed out of the bladder during voiding, but in some cases like low on drinking, a lot of bacteria, aggressive bacteria, low on resistance after an operation etc. an infection can arise. The bacteria do mostly come from one's own bowels, but 'strangers' like gonorrhoea can also cause cystitis. (Psora/ Sycosis)

In male, the cystitis is less common, since the urethra is longer and the bladder farther away from the opening outside. If a man does get an infection of the bladder, it often means that there is something else going on too, like bladder stones, enlargement of the prostate, etc. In the male, a cystitis can easily lead to an infection of the prostate, prostatitis or an epididymitis.



drbcshah.com

Causes

There are many possible causes of cystitis-

- Use of a tampon (a plug of material used to stop a wound or block an opening in the body and absorb blood or secretions) (Causa occasionalis)
- Change of a urinary catheter causing damage to the area (Causa occasionalis)

- There is a higher incidence of cystitis among women who use the diaphragm for contraception. (Causa occasionalis)
- Partial emptying of bladder creating an environment for bacteria to multiply in the bladder. This is fairly common during pregnancy, and in men with prostatomegaly. (Causa occasionalis/ Psora/ Sycosis)
- Sexually active women have a higher risk of bacteria entering via the urethra.
- Urinary system obstructions. (Causa occasionalis)
- Frequent and/or vigorous sex causing physical damage or bruising. (Causa occasionalis)

During the menopause women produce less mucus in the vaginal area. This mucus stops the bacteria from multiplying. Women on HRT (hormone replacement therapy) have a lower risk of developing cystitis compared to menopausal women not on HRT.

Symptoms

- Strong, persistent urge to urinate
- Burning sensation when urinating
- Passing frequent, small amounts of urine
- Hematuria
- Cloudy or strong-smelling urine
- Pelvic discomfort
- A feeling of pressure in the lower abdomen
- Low-grade fever

Bladder stones

Bladder stones are usually not formed by the bladder. They originate as kidney stones, pass through the ureter and end up in the bladder. Compared to the bladder outlet and the urethra, these stones are relatively small and normally washed out quickly, unless, there is some obstruction to the outlet like enlarged prostate, so the stone gets stuck in the bladder and grows. Bladder stones are found more in men. A bladder stone can be impregnated with bacteria, causing a persistent infection of the bladder that will only be cured after removal of the stone.

Causes

Bladder stones begin to generate with residual urine that has not been excreted. (Causa occasionalis/ Psora) Conditions commonly associated with an inability to fully void the bladder include-

Neurogenic bladder

If the nerves communicating between the bladder and brain are damaged as in a stroke or spinal injury (Causa occasionalis/ Syphilis).

Prostate enlargement

If the prostate is enlarged, as it can press on the urethra and cause a disruption in flow. (Psora/ Sycosis)

Medical devices

Foreign objects in the bladder can act as platforms for crystallization to begin like catheters, contraceptive devices, suture material and stents if they migrate to the bladder. (Causa occasionalis)

Bladder inflammation

Urinary tract infections or radiation therapy. (Causa occasionalis/ Psora/ Syphilis)

Kidney stones

Kidney stones can migrate down the ureters and eventually grow into bladder stones. Kidney stones are more common than bladder stones. (Psora)

Bladder diverticula

If they grow to a large enough size, they can hold urine and prevent the bladder from being fully emptied. (Psora/ Sycosis)

Cystocele

In women, the bladder wall can become weak and drop down to the vagina; this can affect the flow of urine from the bladder. (Psora/ Sycosis)

Symptoms

- Frequent urination, especially during the night
- Lower abdominal pain
- A burning sensation or pain in the urethra when urinating
- Bloody or cloudy urine
- Incontinence of urine

Diseases of bladder function

The bladder muscle can be too weak, causing incomplete emptying of the bladder during voiding. On the other hand, the bladder might get too active, causing frequent urination or incontinence or the bladder sphincter might be too weak, which can also cause incontinence.

Causes

- Damage during childbirth (Causa occasionalis)
- Increased intraabdominal pressure, as in pregnancy or obesity (Causa occasionalis)
- Damage to the bladder or nearby area during surgery (Causa occasionalis)
- Neurological conditions such as parkinson's disease or multiple sclerosis (Syphilis)
- Certain connective tissue disorders, such as ehlers-danlos syndrome (Syphilis/ Sycosis)
- Drinking too much alcohol or caffeine (Causa occasionalis)
- Poor fluid intake leads to strong, concentrated urine to collect in bladder, which can irritate the bladder and cause symptoms of overactivity (Causa occasionalis)
- Constipation (Psora)
- Conditions affecting the lower urinary tract, such as urinary tract infections or tumors in the bladder (Psora/ Syphilis/ Sycosis)
- An enlarged prostate gland (Psora/ Sycosis)
- Bladder stones (Psora)
- Birth defect of bladder (Syphilis)
- Injury to your spinal cord (Causa occasionalis)
- A bladder fistula (Psora/ Syphilis)
- Angiotensin-converting enzyme inhibitors (Causa occasionalis)
- Diuretics (Causa occasionalis)
- Some antidepressants (Causa occasionalis)
- Hormone replacement therapy (Causa occasionalis)

- Sedatives (Causa occasionalis)

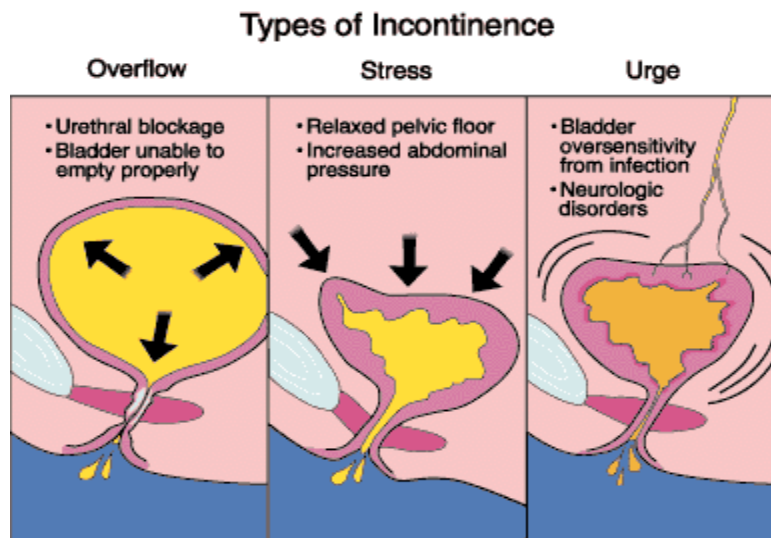
Symptoms

Symptoms of stress incontinence

Involuntary release of urine, especially while cough, sneeze, or laugh. Leaking a small to moderate amount of urine.

Symptoms of urge incontinence

Frequent and sudden uncontrollable urge to urinate



Diagnosis

The bladder and its function can be investigated in different ways.

1) Blood test

- CBC
- KFT
- RBS

2) Urine Examination

- white blood cells
- red blood cells
- calcium or urate or another known stone-forming substance
- pH

3) X-rays

Bladder stone is often visible.

4) CT-scan

Extent of a kidney tumor.

5) Cystogram

During a *cystogram* the bladder is filled with a radiopaque dye. Large bladder tumors will be visible in this way, while, after emptying the bladder, it will show whether the bladder is really empty.

6) Ultrasound

The size of the bladder and the quality of emptying are measured, while bladder stones and large tumors are visualized.

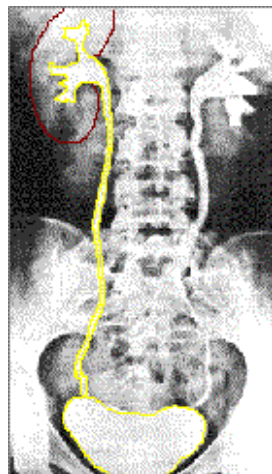
7) Cystoscopy

This is perhaps the most important examination of the bladder, since even very small bladder tumors or stones can be found, while the urethra and prostate can be inspected in one go. One does also get an impression of the quality of the bladder muscles.



8) Urodynamic study

A urodynamic examination is necessary to test the function of the bladder. The bladder is first emptied through a catheter. After another small catheter is inserted into the bladder, it is filled, very gently, with water, while, at the same time the amount of water flowing in the bladder pressure is measured. In this way information is gathered about the bladder capacity, the sensitivity and the way the bladder is emptied again. The examination is important to get information about the condition the bladder is in and to find the cause in cases of incontinence.



Treatment

Cystitis

Treatment depends on the nature, i.e. cause of the cystitis.

BLADDER - INFLAMMATION - accompanied by - Female genitalia; inflammation of *canth.*

BLADDER - INFLAMMATION - accompanied by – fever *Acon. bell. Canth. gels. hydrang. stigm.*

BLADDER - INFLAMMATION - accompanied by - Male genitalia; inflammation of *canth.*

BLADDER - INFLAMMATION - accompanied by - Prostate gland; swelling of **sabal**

BLADDER - INFLAMMATION - accompanied by – swelling **calc.**

BLADDER - INFLAMMATION - accompanied by - urination – dribbling **canth.**

BLADDER - INFLAMMATION - accompanied by - urination – involuntary **canth.**

BLADDER - INFLAMMATION - accompanied by - urination – painful **Acon. bell. Canth. gels. hydrang. stigm.**

BLADDER - INFLAMMATION - accompanied by - urine – bloody **Chim. uva**

BLADDER - INFLAMMATION - accompanied by - urine – burning **Canth.**

BLADDER - INFLAMMATION - acute - accompanied by - urination - urging to urinate **mez.**

BLADDER - INFLAMMATION – acute **acon. ant-t. apis ars. aspar. Bell. benz-ac. berb. camph-ac. Camph. Cann-s. Canth. caps. chim. con. Cop. Cub. dig. Dulc. elat. Equis-h. erig. Eucal. Eup-pur. fab. ferr-act. Ferr-p. Gels. hell. hydrang. hyos. lach. Merc-c. methyl. mez. nit-ac. nux-v. Ol-sant. Pareir. petros. pip-m. Pop. prun. Puls. sabal Sabin. sars. Saur. sep. Stigm. sulph. Ter. tritic. uva vesi.**

BLADDER - INFLAMMATION - cantharis; from abuse of **apis camph.**

BLADDER - INFLAMMATION - catheterization; after **arn. camph-ac. pop. staph.**

BLADDER - INFLAMMATION - chronic cystitis - accompanied by - Urethra; inflammation of **hydr. med.**

BLADDER - INFLAMMATION - chronic cystitis - accompanied by - urination; dribbling **hyper.**

BLADDER - INFLAMMATION - chronic cystitis **ars. bals-p. Baros. Benz-ac. berb. Cann-s. Canth. carb-v. Caust. Chim. coc-c. coll. coloc. Cop. cub. Dulc. Epig. ery-a. eucal. eup-pur. Fab. grin. Hydr. iod. juni-c. Kali-m. lith-c. lyc. Med. Merc-c. nat-c. nit-ac. otit-m-xyz. Pareir. pip-m. Pop. prun. Puls. rhus-a. Sabal santin. seneg. Sep. silphu. Stigm. Sulph. Ter. thlas. thuj. tritic. Tub. Uva vesi.**

BLADDER - INFLAMMATION - coition; after - first intercourse **STAPH.**

BLADDER - INFLAMMATION - coition; after - new sexual relationship; since **Med.**

BLADDER - INFLAMMATION - coition; after **sabad. STAPH.**

BLADDER - INFLAMMATION - cold; after taking a **DULC. Sulph.**

BLADDER - INFLAMMATION – gonorrhoeal **bell. benz-ac. Canth. Cop. cub. merc-c. methyl. puls. sabal**

BLADDER - INFLAMMATION - headache; during **rhus-t.**

BLADDER - INFLAMMATION – hemorrhagic **CANTH.**

BLADDER - INFLAMMATION - hemorrhoids - suppression of; after **Nux-v.**

BLADDER - INFLAMMATION - injuries; after **Arn. Staph.**

BLADDER - INFLAMMATION – interstitial **med.**

BLADDER - INFLAMMATION - menses - before - agg. **senec.**

BLADDER - INFLAMMATION - menses - during - agg. **senec.**

BLADDER - INFLAMMATION - menses - suppressed menses; from **Nux-v.**

BLADDER - INFLAMMATION - Neck of bladder **Acon. Apis aspar. camph. Cann-xyz. CANTH. Caps. cham. Chim. Clem. con. Cop. Dig. elat. guaj. hyos. ign. lyc. Merc-c. Merc-i-r. Nux-v. petr. Petros. plb. Puls. ruta Sars. Senec. staph. sul-ac. sulph.**

BLADDER - INFLAMMATION - operation; after - abdomen; on **pop.**

BLADDER - INFLAMMATION - operation; after - ovaries; after removing **pop.**

BLADDER - INFLAMMATION - operation; after - uterus; after removing **pop.**

BLADDER - INFLAMMATION - operation; after **pop.**

BLADDER - INFLAMMATION - pain and almost clear blood; with violent **Nit-ac.**

BLADDER - INFLAMMATION - pregnancy agg.; during **pop.**

BLADDER - INFLAMMATION - pus-like discharge after lithotomy, with **mill.**

BLADDER - INFLAMMATION - scarlatina; after **Canth.**

BLADDER - INFLAMMATION - throbbing all over; with **sabin.**

BLADDER - INFLAMMATION - women; in **mit.**

BLADDER – INFLAMMATION **ACON. all-c. alth. am-c. Ant-t. APIS arbin. Arg-n. arist-cl. Arn. ars-s-f. Ars. aspar. Bar-m. BELL. Berb. bism. bov. cact. Calad. Calc. camph. Cann-i. cann-s. CANTH. Caps. carb-ac. Caust. Chim. Chinin-s. cinnb. clem. colch. coleus-a. coli. coloc. Con. Cop. Cub. Dig. Dulc. EQUIS-H. Ery-a. Eup-pur. Fab. ferr-p. ferr. gali. Gels. graph. Hell. helon. Hydr. Hyos. kali-ar. kali-bi. kali-c. kali-chl. kali-m. LACH. lil-t. linu-u. lith-c. LYC. lyss. Med. Merc-c. Merc.**

methyl. mez. murx. musa myrt-c. nat-c. Nit-ac. Nux-v. oci-sa. pareir. petr. petros. ph-ac. phos. phys. pip-m. plb-xyz. polyg-h. pop. prun. PULS. rhus-a. Rhus-t. ruta sabal Sabin. SARS. senec. seneg. SEP. solid. squil. staph. stigm. stram. Sulph. tarent. tax. TER. thuj. tritic. uva vacc-m. verat-v. vesi. xanrhoe.

BLADDER - PAIN - cystitis, in - pressing pain LYC.

BLADDER - PAIN - cystitis, in lyc.

BLADDER - PAIN - pressing - cystitis, in LYC.

BLADDER - PAIN - pressing, pressure in - cystitis, in LYC.

FEMALE - ABORTION, miscarriage - cystitis, from acon. cann-s. canth.

FEMALE - ABORTION, miscarriage - cystitis, from acon. cann-s. canth.

GENERALS - HISTORY; personal - cystitis; of recurrent - children; in apis asaf. borx. canth. caps. lach. lyc. MED. nux-v. sars. Sep. STAPH. tub.

GENERALS - HISTORY; personal - cystitis; of recurrent hep. lyc. med. puls. sep. tub.

URINARY SYSTEM - Bladder - Inflammation – Acute acon. ant-t. apis ars. aspar. Bell. benz-ac. berb. camph-ac. Camph. Cann-s. Canth. caps. chim. con. Cop. Cub. dig. Dulc. elat. Equis-h. erig. Eucal. Eup-pur. fab. ferr-act. Ferr-p. Gels. hell. hydrang. hyos. lach. Merc-c. methyl. nit-ac. nux-v. Ol-sant. Pareir. petros. pip-m. Pop. prun. Puls. sabal Sabin. sars. Saur. sep. Stigm. sulph. Ter. tritic. uva vesi.

URINARY SYSTEM - Bladder - Inflammation – Chronic Ars. bals-p. Baros. Benz-ac. berb. Cann-s. Canth. carb-v. Caust. Chim. coc-c. coloc. Cop. cub. Dulc. Epig. ery-a. eucal. Eup-pur. fab. grin. Hydr. iod. juni-c. lith-c. lyc. Merc-c. nit-ac. Pareir. pip-m. Pop. prun. Puls. rhus-a. Sabal santin. seneg. Sep. silphu. Stigm. Ter. thlas. thuj. tritic. tub. Uva vesi.

URINARY SYSTEM - Bladder - Inflammation - from - abuse of Cantharis apis camph.

URINARY SYSTEM - Bladder - Inflammation - from – gonorrhoea bell. benz-ac. Canth. Cop. cub. merc-c. puls. sabal

URINARY SYSTEM - Bladder - Inflammation - from - operations, and in pregnancy pop.

URINARY SYSTEM - Bladder - Inflammation - With fever, strangury Acon. bell. Canth. gels. hydrang. stigm.

Bladder stone

Bladder - STONE in, sensation of - urethra, as of a coc-c.

BLADDER - STONE in, sensation of med. puls. SEP.

BLADDER - STONES in bladder - operation; after Arn. Calen. cham. chin. cupr. mill. nux-v. STAPH. verat.

BLADDER - STONES in bladder - sensation of a stone puls. SEP.

BLADDER - STONES in bladder all-s. Ambr. ant-c. ant-t. apoc. arg-n. ars. aspar. bell. BENZ-AC. BERB. bry. cact. cal-ren. CALC. Cann-s. CANTH. carb-v. card-m. Chin. Coc-c. Coch. coff-t. colch. coloc. cupr. dig. epig. equis-h. Eup-per. graph. hydrang. kali-c. Kalm. kreos. Lach. lipp. Lith-c. LYC. Meny. Merc-c. merc. mez. Mill. naja nat-m. nat-s. Nit-ac. Nux-m. Nux-v. oxyd. pall. Pareir. Petr. Phos. Puls. Raph. rhod. Ruta SARS. SEP. Sil. sul-ac. sulph. tarent. thuj. zinc.

Bladder - STONES, bladder, calculi - calcium, deposits Cal-ren. m-aust. sars. vario.

Bladder - STONES, bladder, calculi - surgery, for, after Arn. CALEN. cham. chin. cupr. mill. nux-v. STAPH. verat.

Bladder - STONES, bladder, calculi acon. Ambr. ant-c. ant-t. arg-n. arn. ars. baros. Bell. BENZ-AC. BERB. cact. CAL-REN. CALC. calen. cann-s. CANTH. card-m. cham. chim. Chin. chinin-s. Coc-c. colch. coloc. con. cupr. dulc. elem. epig. equis-h. erig. ery-a. Eup-pur. fab. gal-ac. hedeo. hep. hydrang. Ipom-p. Lach. lipp. Lith-c. LYC. m-aust. Meny. mez. Mill. morg-g. naja nat-m. nat-s. Nit-ac. Nux-m. Nux-v. oci-sa. oci. onon. op. oxyd. Pareir. Petr. Phos. pipe. Puls. Raph. Ruta SARS. SEP. Sil. sol-x. solid. staph. stigm. sulph. Tab. tarent. thlas. thuj. Urt-u. Uva vario. verat. zinc.

Bladder - ULCERATION, bladder - stones, calculi, caused by all-s.

Bladder - URGING, to urinate - painful, dysuria, urination - stones, with kidney, bladder berb. calc. cann-s. LYC. nux-v. petr. phos. SARS. sep. sil.

Kidneys - COLIC, kidney, pain - cramp-like, towards bladder nit-ac.

Kidneys - COLIC, kidney, pain - right - right ureter to bladder LYC. sars.

URINARY ORGANS - Bladder – stone **AMBR.** **Ant-c.** **ant-t.** **calc.** **lyc.** **MENY.** **NUX-V.** **Phos.** **RUTA SARS.** **sil.** **zinc.**

Urinary organs - Stone - in bladder **puls.** **sars.**

Bladder cancer

BLADDER - CANCER - painful; tormenting **naphthoa.**

BLADDER – CANCER **Anil.** **arg-n.** **ars.** **blatta-o.** **chim.** **clem.** **con.** **congo-r.** **crot-h.** **equis-h.** **gamb.** **hydr.** **mal-ac.** **sabal sars.** **staph.** **tarax.** **TER.** **thuj.** **tor.**

Bladder - CANCER, bladder - bloody, urine, with **Ter.** **Thuj.**

Bladder - CANCER, bladder **acet-ac.** **anil.** **ars.** **calc.** **carb-an.** **Carc.** **Con.** **Crot-h.** **scir.** **sec.** **stann.** **tarax.** **TER.** **Thuj.** **visc.**

Tumors, general - bladder, tumors - urethra, small **lach.**

Tumors, general - bladder, tumors – vascular **cann-s.** **Eucal.**

Tumors, general - bladder, tumors **acet-ac.** **anil.** **Calc.** **carb-v.** **sec.** **thuj.**

Incontinence

BLADDER - PARALYSIS - general - incontinence, with **caust.** **m-aust.** **puls.** **rhus-t.**

BLADDER - PARALYSIS - incontinence, with **caust.** **puls.** **rhus-t.**

Bladder - PARALYSIS, bladder - incontinence, with **caust.** **puls.** **rhus-t.**

BLADDER - URINATION - involuntary - night - accompanied by - eczema; history of **psor.**

BLADDER - URINATION - involuntary - night – adolescence **caust.** **kali-c.** **Lac-c.**

BLADDER - URINATION - involuntary - night - catheterization, after **mag-p.**

BLADDER - URINATION - involuntary - night - children; in **acon.** **aesc.** **Carb-v.** **carc.** **cina lac-c.** **mag-m.** **med.** **nat-p.** **psor.** **puls.** **santin.** **sil.** **syph.** **thuj.**

BLADDER - URINATION - involuntary - night - cough **agg.**; during **colch.**

BLADDER - URINATION - involuntary - night - dreaming of urinating, while **equis-h.** **Kreos.** **lac-c.** **lyc.** **merc-i-f.** **Ph-ac.** **Seneg.** **SEP.** **SULPH.**

BLADDER - URINATION - involuntary - night - first sleep **benz-ac.** **Bry.** **calc.** **Carb-v.** **CAUST.** **cina** **Graph.** **Kreos.** **mag-c.** **merc.** **Ph-ac.** **phos.** **puls.** **SEP.** **SIL.** **sulph.** **zinc.**

BLADDER - URINATION - involuntary - night - four times **cob.**

BLADDER - URINATION - involuntary - night - fright; after **op.** **stram.**

BLADDER - URINATION - involuntary - night - habit; when there is no tangible cause except **EQUIS-H.**

BLADDER - URINATION - involuntary - night - injuries of head; after **sil.**

BLADDER - URINATION - involuntary - night - menses; during **hyos.**

BLADDER - URINATION - involuntary - night - midnight - after - 5 h **act.**

BLADDER - URINATION - involuntary - night - midnight – after **PULS.** **Ruta**

BLADDER - URINATION - involuntary - night - midnight – before **Bry.** **PULS.**

BLADDER - URINATION - involuntary - night - midnight - morning; until **plan.**

BLADDER - URINATION - involuntary - night - moon; full **cina psor.**

BLADDER - URINATION - involuntary - night - morning, toward **am-c.** **cact.** **Calc.** **Caust.** **chlol.** **cina con.** **Hep.** **petr.** **phos.** **Sep.** **Sil.** **stann.** **SULPH.** **zinc.**

BLADDER - URINATION - involuntary - night - old people **apoc.** **benz-ac.** **kali-p.** **sec.**

BLADDER - URINATION - involuntary - night - pregnancy **agg.**; during **pod.**

BLADDER - URINATION - involuntary - night - sleep – deep **Kreos.**

BLADDER - URINATION - involuntary - night - spasmodic enuresis **ARG-MET.** **bell.** **canth.** **caps.** **castm.** **cina coloc.** **Gels.** **hyos.** **ign.** **lach.** **lyc.** **Nux-v.** **op.** **puls.** **rhus-t.** **verat.**

BLADDER - URINATION - involuntary - night - waken the child; difficult to **Bell.** **chlol.** **KREOS.**

BLADDER - URINATION - involuntary - night - weakly children, in **Chin.** **kali-p.** **thyr.**

BLADDER - URINATION - involuntary - night - women; in **Sil.**

BLADDER - URINATION - involuntary - night - worms; from **cina Santin.** **sil.** **sulph.**

BLADDER - URINATION - involuntary – night **acon.** **Aeth.** **alet.** **Aloe Am-c.** **anac.** **anan.** **ant-c.** **ant-t.** **APIS** **Apoc.** **Arg-met.** **ARG-N.** **ARN.** **ars-s-f.** **ARS.** **aur-ar.** **aur-m.** **aur-s.** **Aur.** **bac-t.** **bac.** **bar-c.** **bar-m.** **bar-s.** **BELL.** **BENZ-AC.** **box.** **bry.** **cact.** **calc-sil.** **Calc.** **camph.** **cann-s.** **canth.** **caps.** **carb-an.** **Carb-v.** **Carbn-s.** **carc.** **CAUST.** **Cham.** **chin.** **chinin-ar.** **Chlol.** **cic.** **cimx.** **Cina**

clem. coca cocc. colch. coloc. con. **Crot-c.** cub. cupr. cycl. dig. dulc. enterob-v. **EQUIS-H.** Eup-pur. Ferr-ar. ferr-i. ferr-p. **FERR.** Fl-ac. gels. glycyr-g. **GRAPH.** guaj. Hep. hyos. ign. kali-br. kali-c. kali-m. **KALI-N.** Kali-p. kali-sil. **KREOS.** **LAC-C.** lac-d. lach. laur. led. lina. lyc. m-aust. mag-c. **Mag-m.** **MAG-P.** mag-s. mand. **Med.** meny. **Merc.** mur-ac. **Nat-ar.** **Nat-c.** **NAT-M.** **Nat-p.** **NIT-AC.** nux-v. **Op.** ox-ac. **Petr.** ph-ac. **Phos.** phys. **Plan.** plb. **Podo.** **Psor.** **PULS.** quas. rheum rhus-a. **RHUS-T.** **Ruta Sabal Sanic.** santin. **Sars.** sec. sel. **Seneg.** **SEP.** **SIL.** spig. spong. squil. staph. **Stram.** sul-ac. **SULPH.** **Syc.** syph. tab. ter. **Thuj.** **Thyr.** tritic. **Tub.** uran-met. **Uran-n.** uva verat. **Verb.** **Viol-t.** zinc-p. zinc.

BLADDER - URINATION - involuntary - night, incontinence in bed - morning, toward am-c. cact. carb-v. chlol. cina zinc.

BLADDER - URINATION - involuntary - night, incontinence in bed - autumn agg. puls.

BLADDER - URINATION - involuntary - night, incontinence in bed - winter agg. puls.

BLADDER - URINATION - involuntary - night, incontinence in bed - children, in weak **CHIN.**

BLADDER - URINATION - involuntary - night, incontinence in bed - dreaming of urination, while bell. **equis-h.** **KREOS.** lac-c. lyc. merc-f. **SENEG.** **SEP.** sulph.

BLADDER - URINATION - involuntary - night, incontinence in bed - injury of head, after **SIL.**

BLADDER - URINATION - involuntary - night, incontinence in bed - masturbation tendency, in **sep.**

BLADDER - URINATION - involuntary - night, incontinence in bed - moon, at full **psor.**

BLADDER - URINATION - involuntary - night, incontinence in bed - sleep - deep, from puls.

BLADDER - URINATION - involuntary - night, incontinence in bed - sleep - first, in **benz-ac.** bry. **CAUST.** cina **KREOS.** merc. **PH-AC.** phos. puls. rhus-t. **SEP.** **SIL.** sulph. tub. zinc.

BLADDER - URINATION - involuntary - night, incontinence in bed - sleep - first, in - winter agg., summer amel. **caust.**

BLADDER - URINATION - involuntary - night, incontinence in bed - tangible cause except habit, when there is no **EQUIS-H.**

BLADDER - URINATION - involuntary - night, incontinence in bed - worms, from sil.

BLADDER - URINATION - involuntary - night, incontinence in bed - morning, toward am-c. cact. carb-v. chlol. cina zinc.

BLADDER - URINATION - involuntary - night, incontinence in bed - dreaming of urination, while bell. **equis-h.** **Kreos.** lac-c. lyc. merc-f. **Seneg.** **Sep.** sulph.

BLADDER - URINATION - involuntary - night, incontinence in bed - injury of head, after **Sil.**

BLADDER - URINATION - involuntary - night, incontinence in bed - first sleep, in **benz-ac.** bry. **CAUST.** cina **Kreos.** **Ph-ac.** phos. puls. rhus-t. **SEP.** tub.

BLADDER - URINATION - involuntary - night, incontinence in bed - first sleep, in - Winter agg., Summer amel. **caust.**

BLADDER - URINATION - involuntary - night, incontinence in bed - spasmodic enuresis **ARG-MET.** bell. canth. caps. castm. cina coloc. **Gels.** hyos. ign. lach. lyc. **Nux-v.** op. puls. rhus-t. verat.

BLADDER - URINATION - involuntary - night, incontinence in bed - tangible cause except habit, when there is no **EQUIS-H.**

BLADDER - URINATION - involuntary - night, incontinence in bed - weakly children, in **Chin.**

BLADDER - URINATION - involuntary - night, incontinence in bed **abies-c.** **ACON.** **AETH.** agri. alet. alum. am-be. **AM-C.** anac. anan. **APIS APOC.** **ARG-MET.** **ARG-N.** arist-cl. **ARN.** ars-s-f. **ARS.** aur-ar. aur-m. **AUR-S.** **AUR.** bac. bar-c. bar-m. bar-s. **BELL.** **BENZ-AC.** **BRY.** cact. calc-o-t. calc-p. calc-sil. **CALC.** camph-br. **CANTH.** caps. **CARB-V.** **CARBN-S.** carc. castm. **CAUST.** **CHAM.** chin. chinin-ar. **CHLOL.** cimx. **CINA** clem. coca coloc. con. **CROT-C.** cub. cupr. dig. dulc. dys. ephin-m. **EQUIS-H.** **EUP-PUR.** ferr-ar. ferr-i. **FERR-P.** **FERR.** **FL-AC.** gaert. gels. **GRAPH.** **HEP.** hyos. **HYPER.** ign. iod. ip. iris kali-br. **KALI-C.** kali-chl. **KALI-N.** **KALI-P.** kali-sil. **KREOS.** **LAC-C.** lac-d. lach. **LINA.** lupin. lyc. **M-AUST.** mag-c. **MAG-M.** **MAG-P.** mag-s. mand. **MED.** merc-f. **MERC.** mill. morg-g. mur-ac. **NAT-AR.** **NAT-C.** **NAT-M.** **NAT-P.** nat-s. nat-sil. **NIT-AC.** nux-v. **OP.** ox-ac. **PETR.** petros. ph-ac. **PHOS.** physal-dl. pix plan-l. **PLAN.** plumbg-eu. **PODO.** pop. **PSOR.** **PULS.** quas. **QUERC-R.** rheum **RHUS-A.** **RHUS-T.** **RUTA SABAL SANIC.** santin. **SARS.** sec. sel. **SENEG.** **SEP.** **SIL.** **SPIG.** squil. **STAPH.** **STRAM.** **SULPH.** **SYC.** tab. tarax. ter.

THUJ. THYR. TUB. uran-met. URAN-N. UVA valer. verat. VERB. viol-o. VIOL-T. visc. zinc-phic. zinc.

BLADDER - URINATION - involuntary - night, incontinence in bed abies-c. Acon. Aeth. alet. alum. am-be. Am-c. anac. anan. APIS Apoc. Arg-met. ARG-N. arist-cl. ARN. ars-s-f. ARS. aur-ar. aur-m. Aur-s. Aur. bac. bar-c. bar-m. bar-s. BELL. BENZ-AC. Bry. cact. calc-o-t. calc-p. calc-sil. Calc. camph-br. canth. caps. Carb-v. Carbn-s. carc. castm. CAUST. Cham. chin. chinin-ar. Chlol. cimx. Cina coca coloc. con. Crof-c. cub. cupr. dulc. dys. EQUIS-H. Eup-pur. ferr-ar. ferr-i. Ferr-p. FERR. Fl-ac. gaert. gels. GRAPH. Hep. hyos. ign. iod. iris kali-br. Kali-c. kali-chl. Kali-p. kali-sil. KREOS. LAC-C. lac-d. lach. lina. lyc. m-aust. mag-c. Mag-m. MAG-P. mag-s. mand. Med. merc-f. Merc. morg-g. mur-ac. Nat-ar. Nat-c. NAT-M. Nat-p. nat-s. nat-sil. NIT-AC. nux-v. Op. ox-ac. Petr. ph-ac. Phos. physal-al. pix Plan. Podo. Psor. PULS. quas. rheum Rhus-a. RHUS-T. Ruta Sanic. santin. Sars. sec. sel. Seneg. SEP. SIL. spig. squil. Staph. Stram. SULPH. Syc. tab. ter. Thuj. Thy. TUB. Uran-n. uva verat. Verb. viol-o. Viol-t. zinc-phic. zinc.

BLADDER-URINARY ORGANS - URINATION, - involuntary - night (incontinence in bed) acon. Aeth. Am-c. anac. anan. APIS Apoc. Arg-met. ARG-N. ARN. ARS. aur-m. aur-s. Aur. bar-c. bar-m. BELL. BENZ-AC. bry. cact. Calc. canth. Carb-v. Carbn-s. CAUST. Cham. chin. Chlol. cimx. Cina coca con. Crof-c. cub. cupr. dulc. EQUIS-H. Eup-pur. Ferr-ar. ferr-i. ferr-p. FERR. Fl-ac. GRAPH. Hep. hyos. ign. kali-c. Kali-p. KREOS. LAC-C. lac-d. lyc. mag-c. Mag-m. MAG-P. mag-s. Med. Merc. mur-ac. Nat-act. Nat-c. NAT-M. Nat-p. NIT-AC. nux-v. Op. ox-ac. Petr. ph-ac. Phos. Plan. Podo. Psor. PULS. RHUS-T. Ruta Sanic. Sars. Seneg. SEP. SIL. spig. squil. staph. Stram. SULPH. tab. ter. Thuj. Tub. Uran-met. verat. Verb. Viol-t. zinc.

BLADDER-URINARY ORGANS - URINATION, - involuntary - night (incontinence in bed) - morning, toward am-c. cact. chlol. zinc.

BLADDER-URINARY ORGANS - URINATION, - involuntary - night (incontinence in bed) - midnight to morning

BLADDER-URINARY ORGANS - URINATION, - involuntary - night (incontinence in bed) - difficult to waken the child Bell. KREOS.

BLADDER-URINARY ORGANS - URINATION, - involuntary - night (incontinence in bed) - dreaming of urinating, while Kreos. lac-c. lyc. merc-i-f. Seneg. Sep. sulph.

BLADDER-URINARY ORGANS - URINATION, - involuntary - night (incontinence in bed) - first sleep benz-ac. CAUST. cina Kreos. Ph-ac. SEP.

BLADDER-URINARY ORGANS - URINATION, - involuntary - night (incontinence in bed) - spasmodic enuresis ARG-MET. bell. canth. caps. castm. cina coloc. Gels. hyos. ign. lach. lyc. Nux-v. op. puls. rhus-t. verat.

BLADDER-URINARY ORGANS - URINATION, - involuntary - night (incontinence in bed) - tangible cause except habit, when there is no EQUIS-H.

BLADDER-URINARY ORGANS - URINATION, - involuntary - night (incontinence in bed) - weakly children, in Chin.

Constitutions - ELDERLY, constitutions - flabby, chronic incontinence of urine, from paralysis of sphincter vesicae Thuj.

CORYZA - Concomitants - urine - incontinence of verat.

DREAMS - STOOL – incontinence dulc. haliae-lc.

FEMALE SEXUAL SYSTEM - Lochia - Urinary incontinence arn. bell. caust. hyos. tril-p.

Heart - HEARTBEATS, general - frequent, each beat double, one hard and full, the other soft and small - incontinence of urine, with Arg-n.

Heart - HEARTBEATS, general - weak - incontinence of urine, with Arg-n.

Incontinence stool, urine, sexual, etc. - fright, from op.

Incontinence stool, urine, sexual, etc. Aloe arg-n. Arn. ars. BELL. CAUST. chin. con. dios. Gels. Hyos. mur-ac. nat-m. PH-AC. Phos. Podo. Puls. Sel. Sep. staph. Sulph. uran-n.

MIND - FEAR - coition - during - incontinence of urine, causing long lasting Lyc.

MIND - FEAR - coition, during - incontinence of urine, causing prolonged LYC.

MIND - FEAR - wet his bed; fear he will alum. cob.

plan. BLADDER-URINARY ORGANS - URINATION, - involuntary - night (incontinence in bed) - midnight to morning - after, 5 a.m. **cact.**

STOMACH - INDIGESTION - incontinence of urine, with **vib-od.**

STOMACH - INDIGESTION - incontinence of urine, with **vib-od.**

Stomach - INDIGESTION, general - incontinence, of urine, with **vib-od.**

URINARY SYSTEM - Bladder - Enuresis, incontinence - cause - Catheterization, after **mag-p.**

URINARY SYSTEM - Bladder - Enuresis, incontinence - cause - Digestive disturbances **benz-ac. Nux-v. puls.**

URINARY SYSTEM - Bladder - Enuresis, incontinence - cause - During - first sleep; child aroused with difficulty **caust. kreos. Sep.**

URINARY SYSTEM - Bladder - Enuresis, incontinence - cause - During - full moon; intractable cases; eczematous history **psor.**

URINARY SYSTEM - Bladder - Enuresis, incontinence - cause - Habit the only ascertainable cause **equis-h.**

URINARY SYSTEM - Bladder - Enuresis, incontinence - cause - History of sycosis **med.**

URINARY SYSTEM - Bladder - Enuresis, incontinence - cause - Hysteria **ign. valer.**

URINARY SYSTEM - Bladder - Enuresis, incontinence - cause - Weak or parietic sphincter vesicae **apoc. Bell. Caust. con. ferr-p. Gels. nux-v. rhus-a. Sabal sec. Stry.**

URINARY SYSTEM - Bladder - Enuresis, incontinence - cause - Worms **cina Santin. sulph.**

URINARY SYSTEM - Bladder - Enuresis, incontinence - occurrence - In old people **aloe am-be. Arg-n. Benz-ac. canth. Dam. equis-h. Gels. nit-ac. Rhus-a. sec. seneg.**

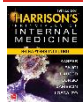
URINARY SYSTEM - Bladder - Enuresis, incontinence - occurrence - Diurnal **arg-n. bell. caust. equis-h. Ferr-p. Ferr. sec.**

URINARY SYSTEM - Bladder - Enuresis, incontinence - occurrence - Nocturnal **am-c. arg-n. arn. ars. Bell. benz-ac. calc. Caust. cina coca Equis-h. eup-pur. ferr-i. ferr-p. gels. hep. ign. kali-br. mag-p. Med. phys. Plan. Puls. quas. Rhus-a. santin. sec. Sil. Sulph. thuj. Thy. uran-n. verb.**

URINARY SYSTEM - Bladder - Enuresis, incontinence - Remedies in general **acon. agar. apis Arg-n. arn. ars. atro. Bell. Benz-ac. calc. canth. Caust. cic. cimic. Cina con. Dulc. Equis-h. ery-a. eup-per. Eup-pur. Ferr-p. ferr. Gels. hydrang. hyos. Kali-br. kali-n. kali-p. Kreos. lina. Lup. lyc. mag-p. med. Nux-v. op. petr. ph-ac. phys. plan. Puls. Rhus-a. rhus-t. Sabal sanic. Santin. sec. seneg. Sep. sil. stram. Sulph. ter. thuj. Thy. tritic. tub. Uran-n. Verb. zinc.**

URINE - Incontinence of **ACON. ant-t. ARG-MET. Bell. canth. clem. con. cupr. Dig. dros. hyos. Led. mag-c. nit-ac. ph-ac. podo. Puls. RHUS-T. SQUIL. stram. TARAX. VERAT.**

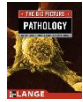
Bibliography



Bladder and Renal Cell Carcinomas > BLADDER CANCER Harrison's Principles of Internal Medicine ... Transitional cell epithelium lines the urinary tract from the renal pelvis to the ureter...



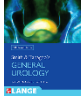
Chapter 12. Rehabilitation > Urinary Tract Infections and Impaired Bladder Control Current Diagnosis & Treatment in Orthopedics, 5e ... Urinary tract infections are a common source of sepsis and prolonged illness. An indwelling...



Chapter 16. Pathology of the Kidney and Bladder Pathology: The Big Picture



Chapter 2. Embryology of the Urogenital System & Congenital Anomalies of the Genital Tract > Male: Urinary Bladder, Urethra, & Penis (Fig. 2–15) CURRENT Diagnosis & Treatment: Obstetrics & Gynecology, 11e ... of urinary bladder and urethra. (Explanatory symbols are given in Fig. 2–1 .) Figure 2–22...



Chapter 21. Urothelial Carcinoma: Cancers of the Bladder, Ureter, & Renal Pelvis Smith and Tanagho's General Urology, 18e



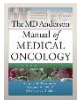
Chapter 25. Urinary Diversion & Bladder Substitutions > Continent Urinary Diversion and Bladder Substitution Smith and Tanagho's General Urology, 18e



Chapter 25. Urinary Diversion & Bladder Substitutions > Urinary Diversion & Bladder Substitutions: Introduction Smith and Tanagho's General Urology, 18e ... Selected patients with lower urinary tract cancers or severe functional or anatomic abnormalities...



Chapter 28. Neuropathic Bladder Disorders Smith and Tanagho's General Urology, 18e



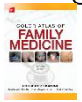
Chapter 33. Bladder Cancer The MD Anderson Manual of Medical Oncology, 2e



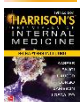
Chapter 38. Disorders of the Bladder, Prostate, & Seminal Vesicles > Acquired Diseases of the Bladder Smith and Tanagho's General Urology, 18e



Chapter 38. Disorders of the Bladder, Prostate, & Seminal Vesicles Smith and Tanagho's General Urology, 18e



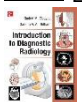
Chapter 72. Bladder Cancer The Color Atlas of Family Medicine, 2e



Dysuria, Bladder Pain, and the Interstitial Cystitis/Bladder Pain Syndrome > INTERSTITIAL CYSTITIS/BLADDER PAIN SYNDROME Harrison's Principles of Internal Medicine ... condition is characterized by pain perceived to be from the urinary bladder, urinary urgency and frequency...



Encyclopedia Homoeopathica



Genitourinary System > THE URINARY BLADDER Introduction to Diagnostic Radiology ... a normal renal pelvis, ureters, and urinary bladder. The urinary bladder lies in the pelvis...



Radar 10



Chapter 17. Urinary Stone Disease Smith and Tanagho's General Urology, 18e